

Ridgeview Elementary School

Outdoor Classroom Proposal

Dunlap, IL

Classroom Goals:

- Create space for kids to engage imagination
- Design specific place for classroom activities to occur
- Produce a functional concept design that is easy to move throughout
- Encourage students to explore nature
- Bring nature into everyday play for children to appreciate it more
- Build an outdoor space for children to enjoy, learn, and have fun!

Wilder-Waite Grade School



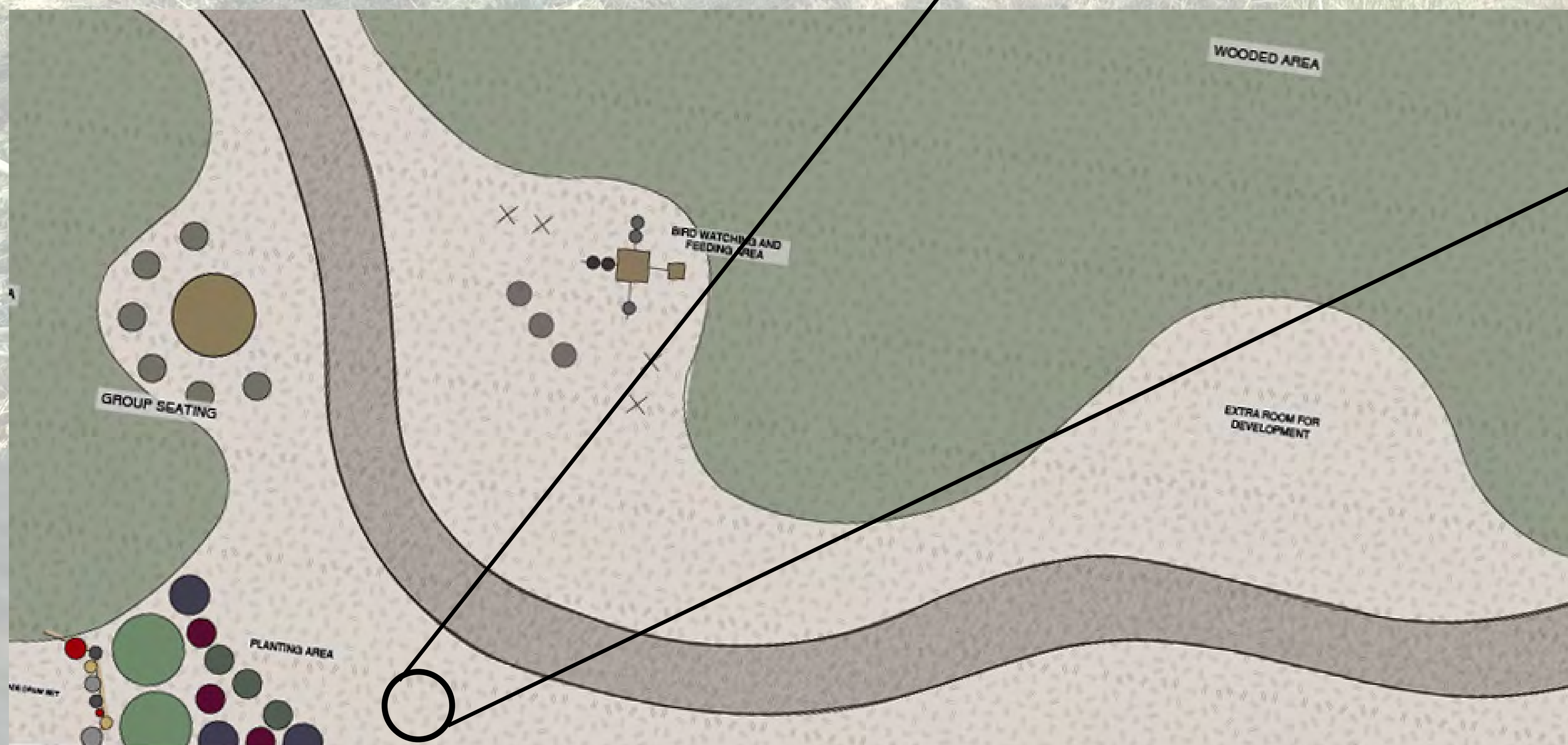
THIS AREA IS SPECIFICALLY DESIGNED TO ALLOW A FLUENT WAY TO MOVE THROUGH THE SITE. THE CLASSROOMS ARE PLACED IN SPECIFIC POCKETS IN THE LOT TO MAXIMIZE FREE SPACE. THEY ARE PLACED AT A GOOD DISTANCE AWAY FROM POTENTIALLY LOUDER ACTIVITIES, AND GIVES THE OPTION TO MOVE CLASSROOM AROUND. THE MAIN PATHS ARE RIVER ROCK AND THE REST OF THE AREA IS SUBJECT TO HOWEVER YOU FEEL WOULD BE THE MOST MANAGEABLE. THIS CLASSROOM IS WELCOMING TO NOT ONLY THE STUDENTS BUT THEIR PARENTS.

Base Plan



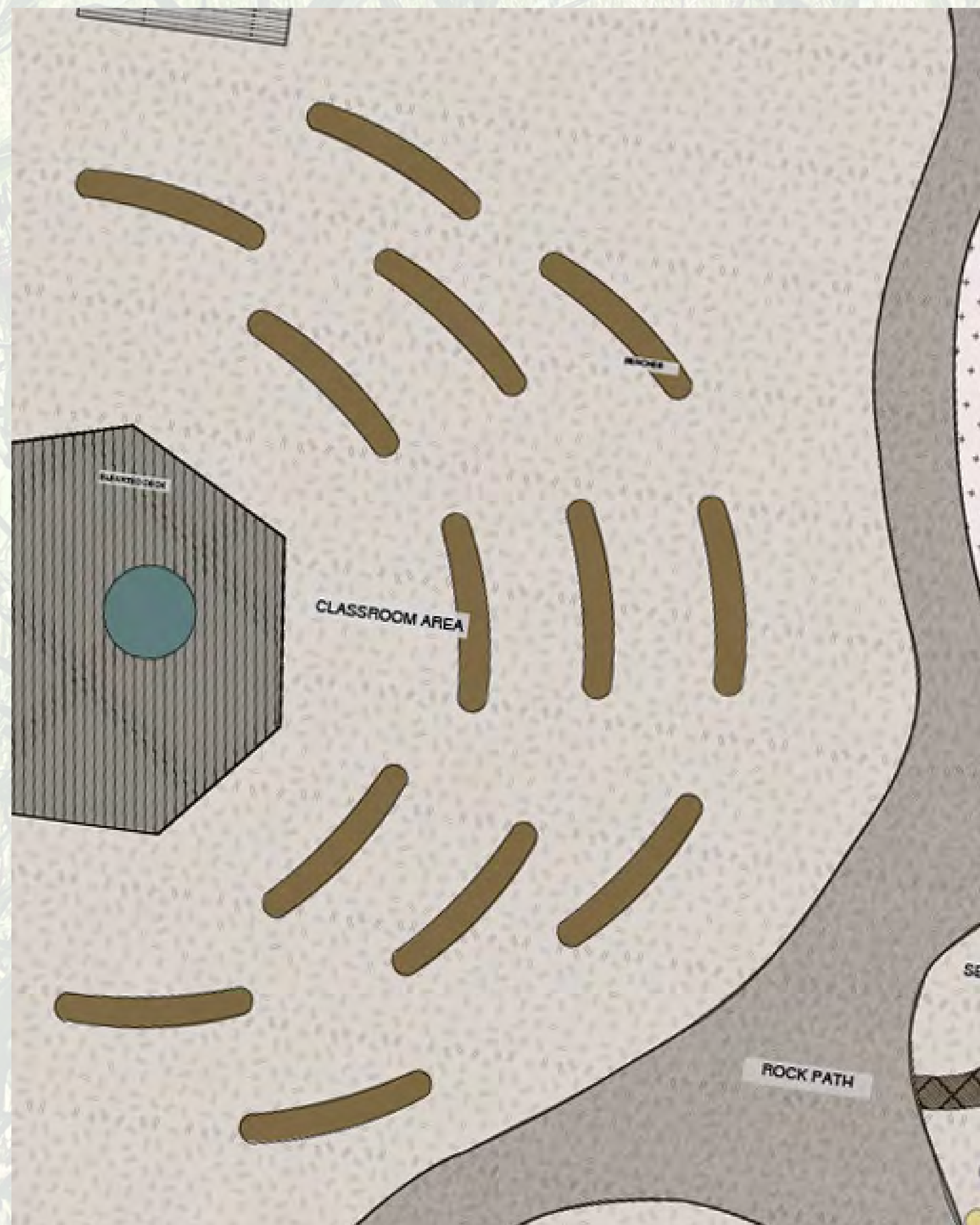
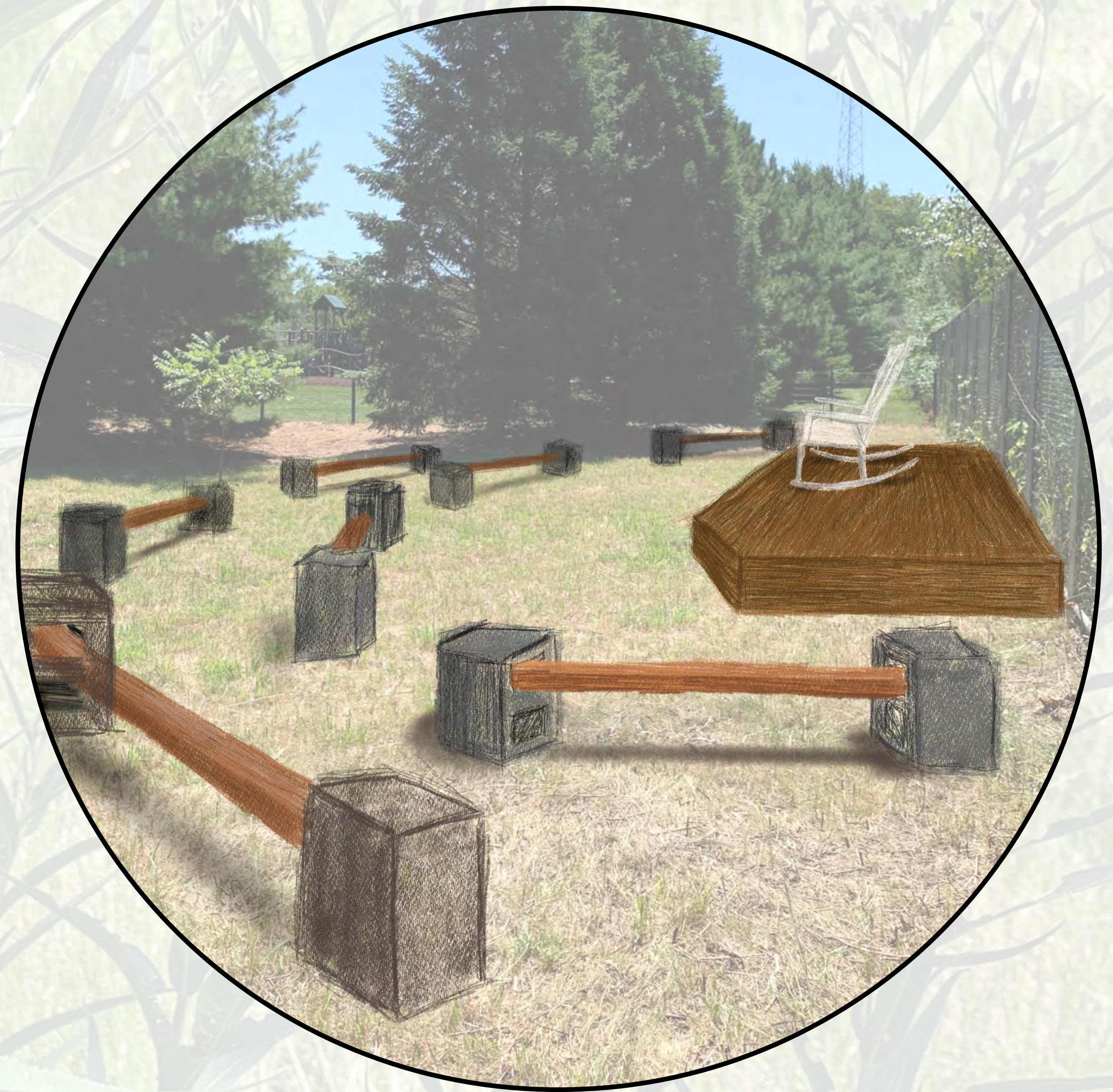
Front Walkway

THIS AREA WELCOMES ANY VISITORS TO THE CLASSROOM. THE PLANTINGS ARE NOT ONLY CONSTRICTED TO THE CORNER. A WELCOME SIGN WOULD ADD A FINISHING TOUCH TO THE ENTRY WAY. THE BIRD FEEDING AREA ALLOWS FOR KIDS TO MAKE FEEDERS AND WATCH AS THE BIRDS INTERACT WITH THE FEEDERS.



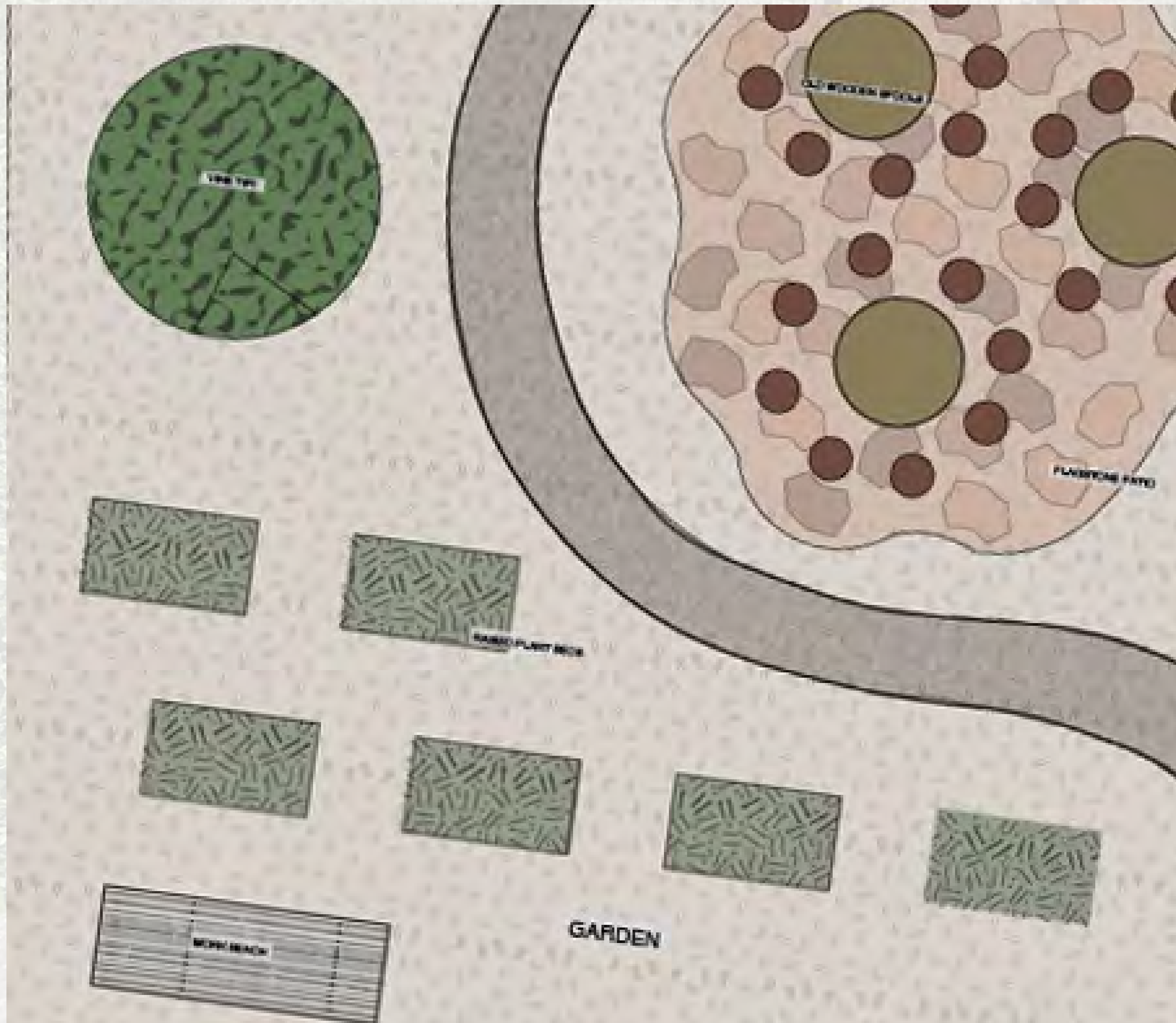
CLASSROOM 1

THIS IS THE MAIN AND LARGEST CLASSROOM AREA. A DECK ALLOWS FOR A STAGE FOR ACTIVITIES TO OCCUR AND A PLATFORM FOR THE TEACHER TO SIT. THIS AREA CAN ALLOW FOR PERFORMANCES. THE BENCHES ARE BUILT USING CINDER BLOCKS AND 2X4S ALLOWING FOR AN EASY INSTALLATION AND ALLOWING FOR MOVABLE SEATS



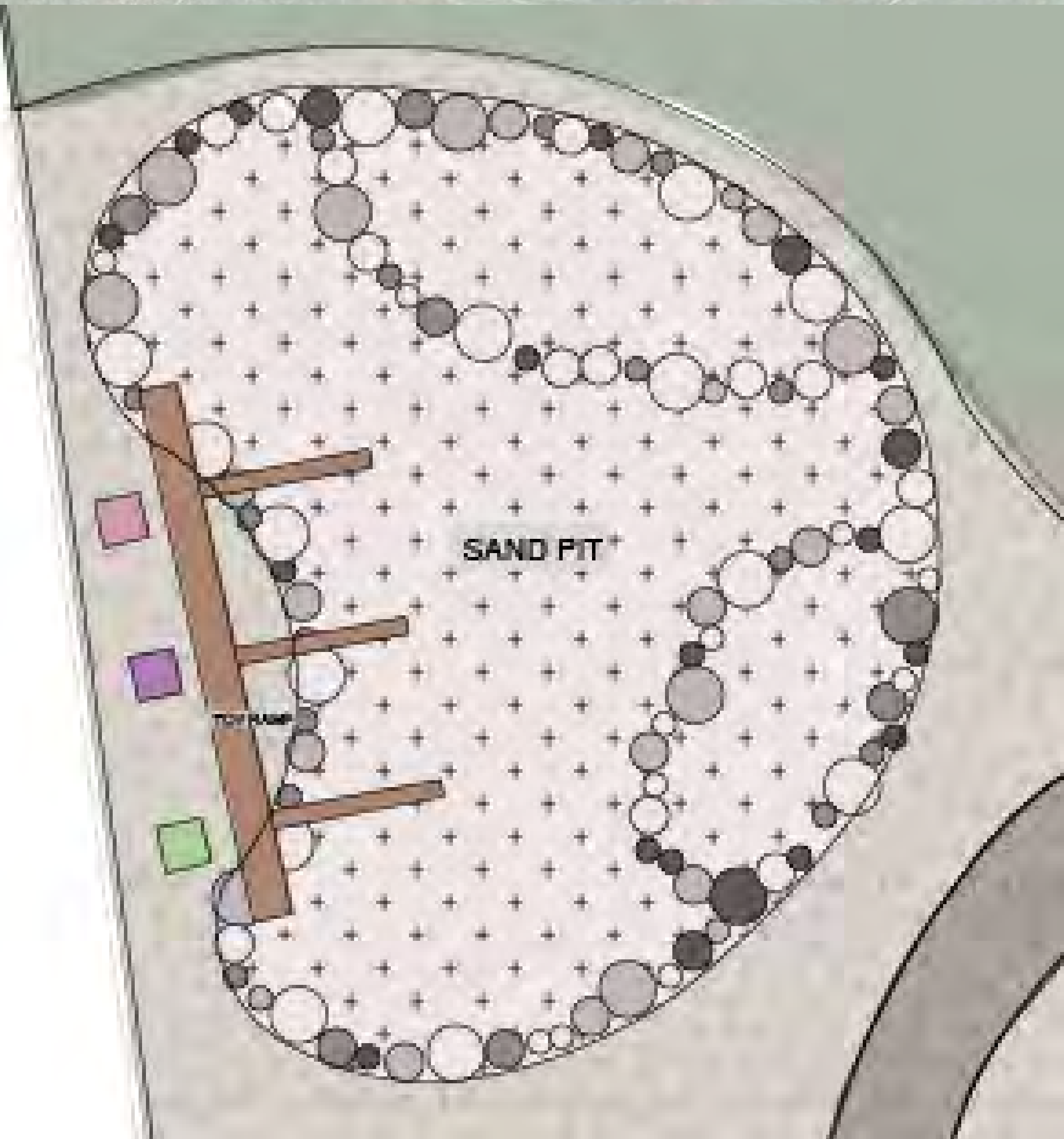
Garden Area

THIS AREA IS FOR KIDS TO LEARN ABOUT GARDENING AND PLANTS. THEY CAN WATCH THEIR PLANTS GROW WHILE CARING FOR THEM. THE TOP LEFT CIRCLE IS A VINE TI-PI FOR KIDS TO SIT UNDER. THE BEDS CAN BE BUILT MANY DIFFERENT WAYS. A BUILDING TABLE IS ALSO RECOMMENDED FOR POTS TO BE PLANTED/



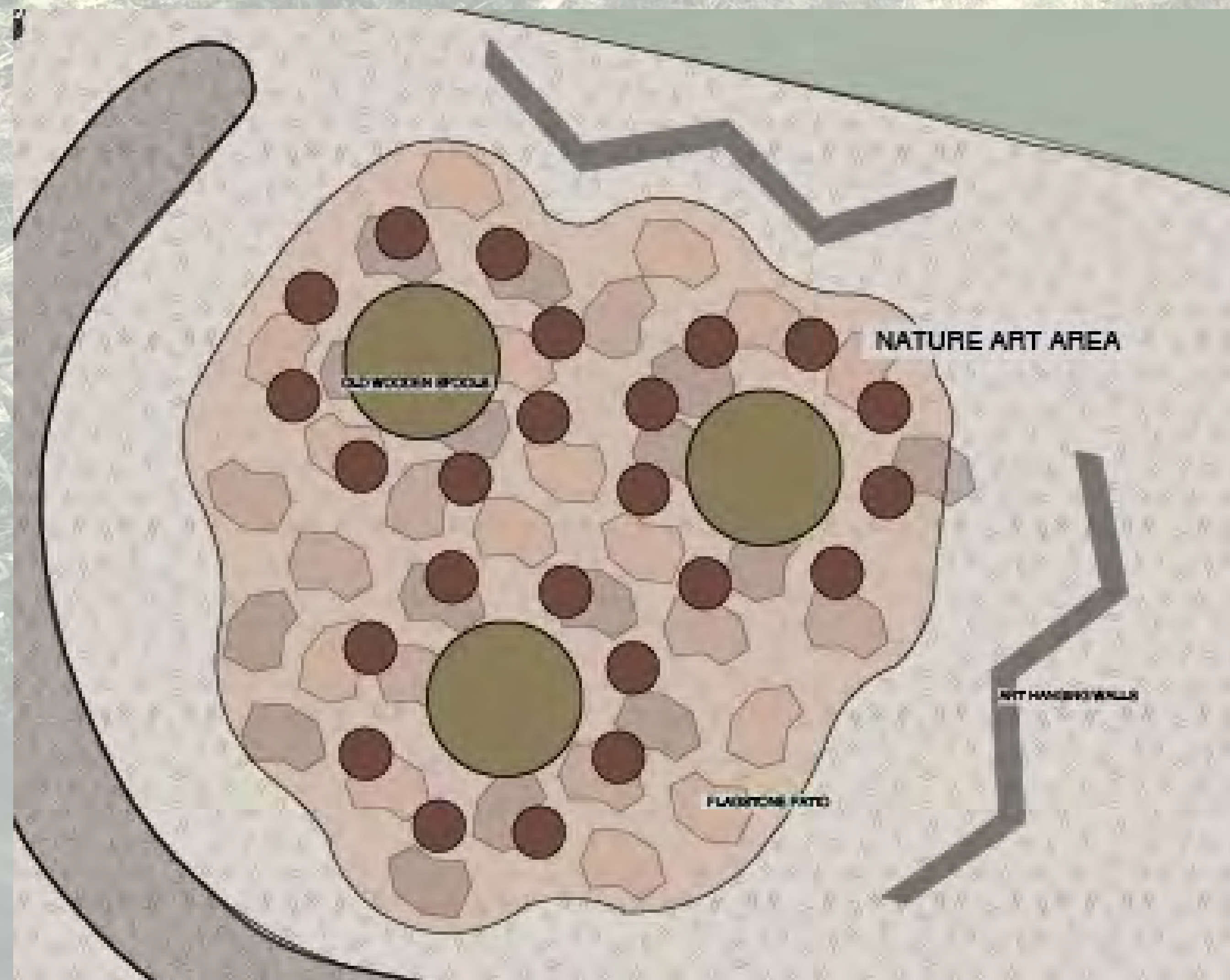
Sand Pit

THE SAND PIT ENCOURAGES THE KIDS TO DIG AND BUILD. THERE ARE MANY WAYS FOR THE KIDS TO INTERACT WITH THE SPACE. RANDOM HOUSEHOLD UTENSILS CAN BE USED FOR TOYS. THE RAMP STRUCTURE ALLOWS THE KIDS TO RACE TOYS DOWN INTO THE PIT. THE DIGGER IS A FUN TOOL FOR THE KIDS TO DIG WITH. IF SAND IS NOT PREFERRED, DIRT CAN BE REPLACED.



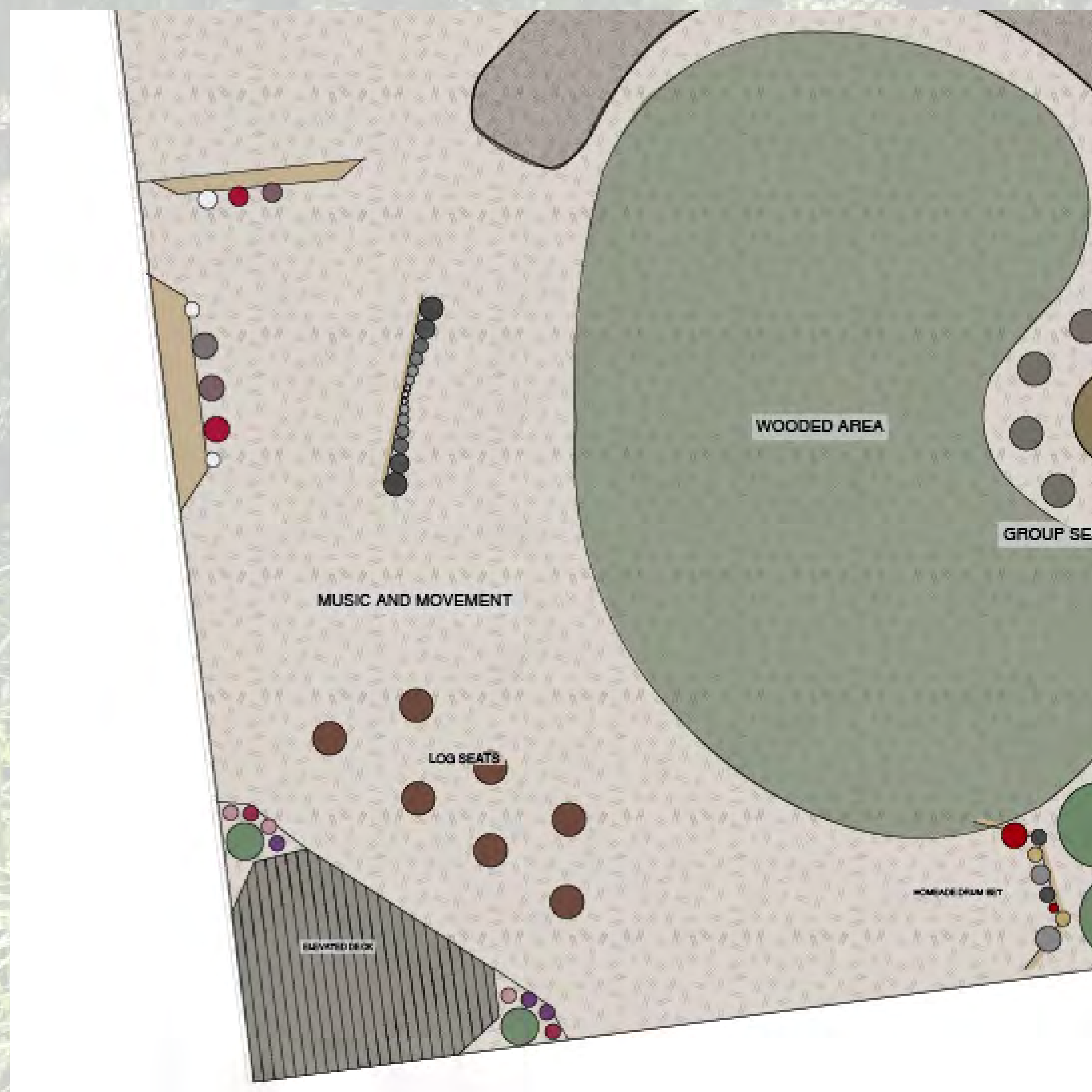
Nature Art Area

THIS SPACE IS ON A PAVER PATIO. THE DESKS CAN BE MADE OUT OF WOODEN SPOOLS AND CAN BE PLANTED HOW EVER DESIRED. THE TABLES ARE SURROUNDED BY LOG SEATS. THIS AREA ALLOWS FOR KIDS TO MAKE ART OUT OF NATURAL ITEMS. THE STRUCTURES SURROUNDING THE TABLES ARE PLACES FOR THEIR ART WORK TO HANG.



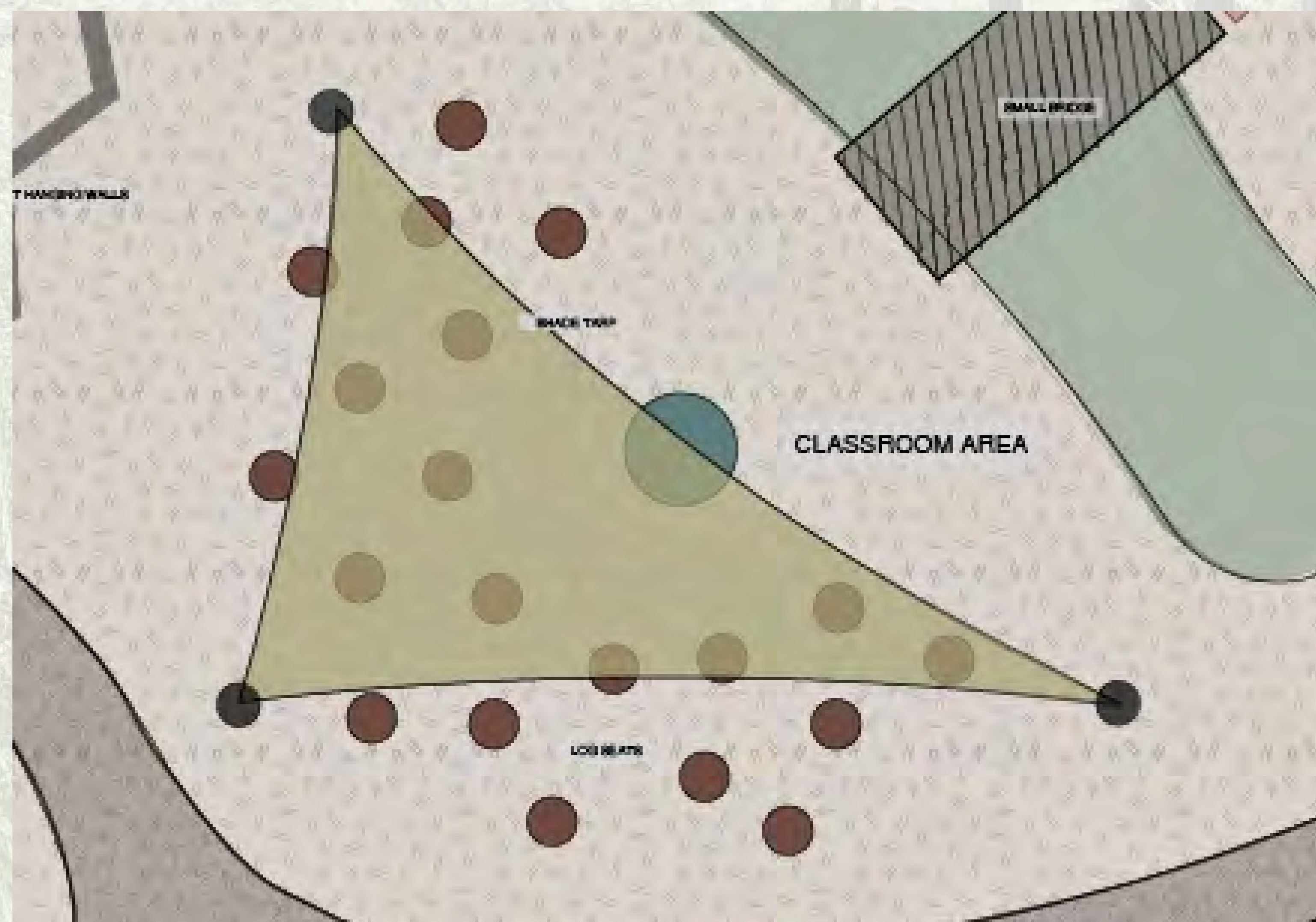
Music and Movement

THE MUSIC AND MOVEMENT AREA ENCOURAGES KIDS TO CREATE MUSIC AND BEATS TO EVERYDAY ITEMS. THIS AREA IS THE MOST HANDS ON SPACE. THE KIDS WILL BE ABLE TO USE HOUSEHOLD EVERYDAY OBJECTS TO CREATE MUSIC. ANYTHING THAT MAKES MUSIC CAN BE BUT IN THE SPACE.



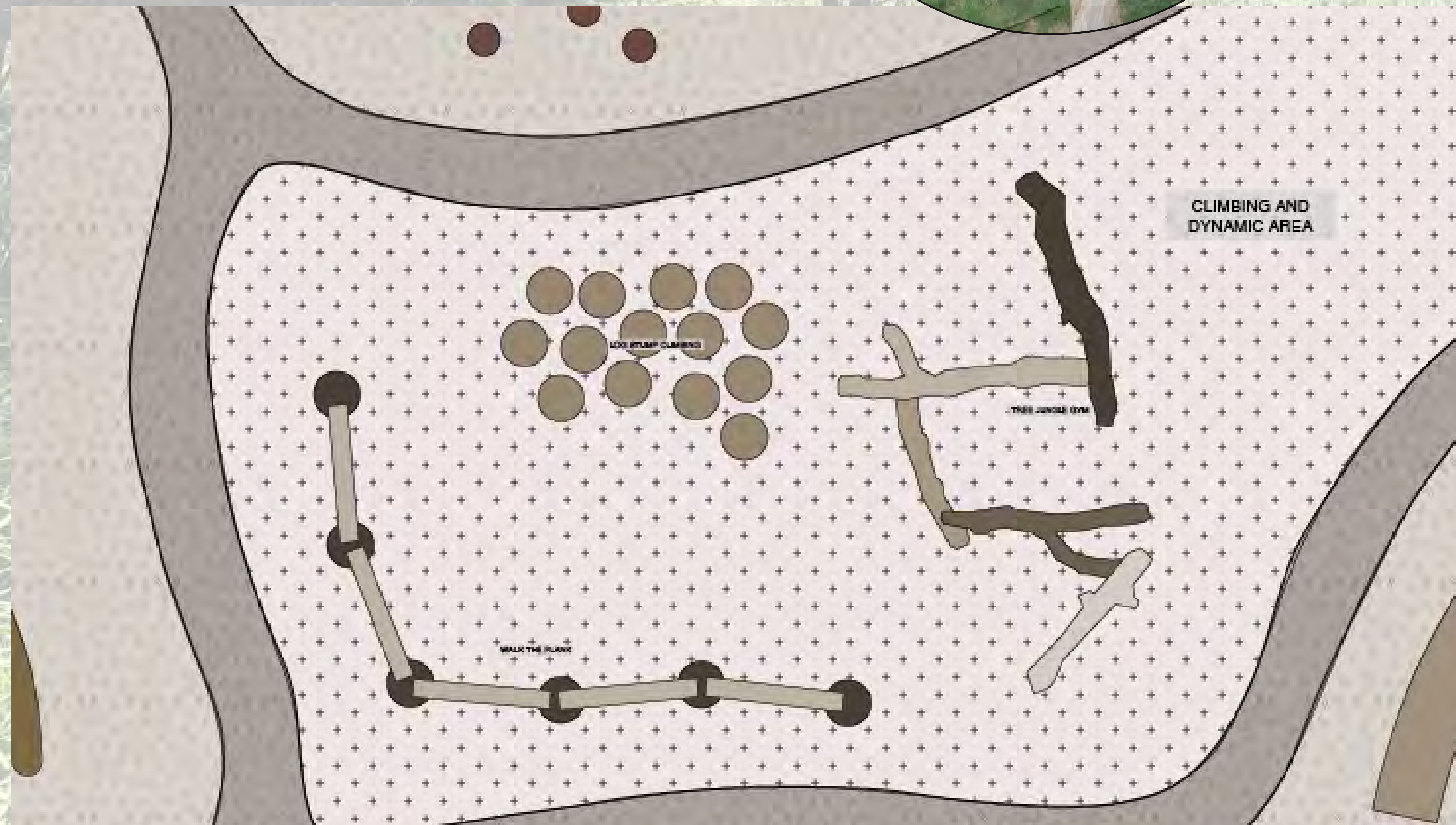
CLASSROOM 2

THIS CLASSROOM IS THE SMALLER OF THE THREE. THIS IS A SMALL SPACE THAT LOG SEATS INCLUDED. THESE SEATS CAN BE MOVED HOW EVER THE CLASS CALLS FOR. THE AREA IS COVERED BY A SAIL SHADE ALLOWING FOR A BREAK FROM THE SUN. THE SEATS CAN BE MOVED WITH THE SUN.



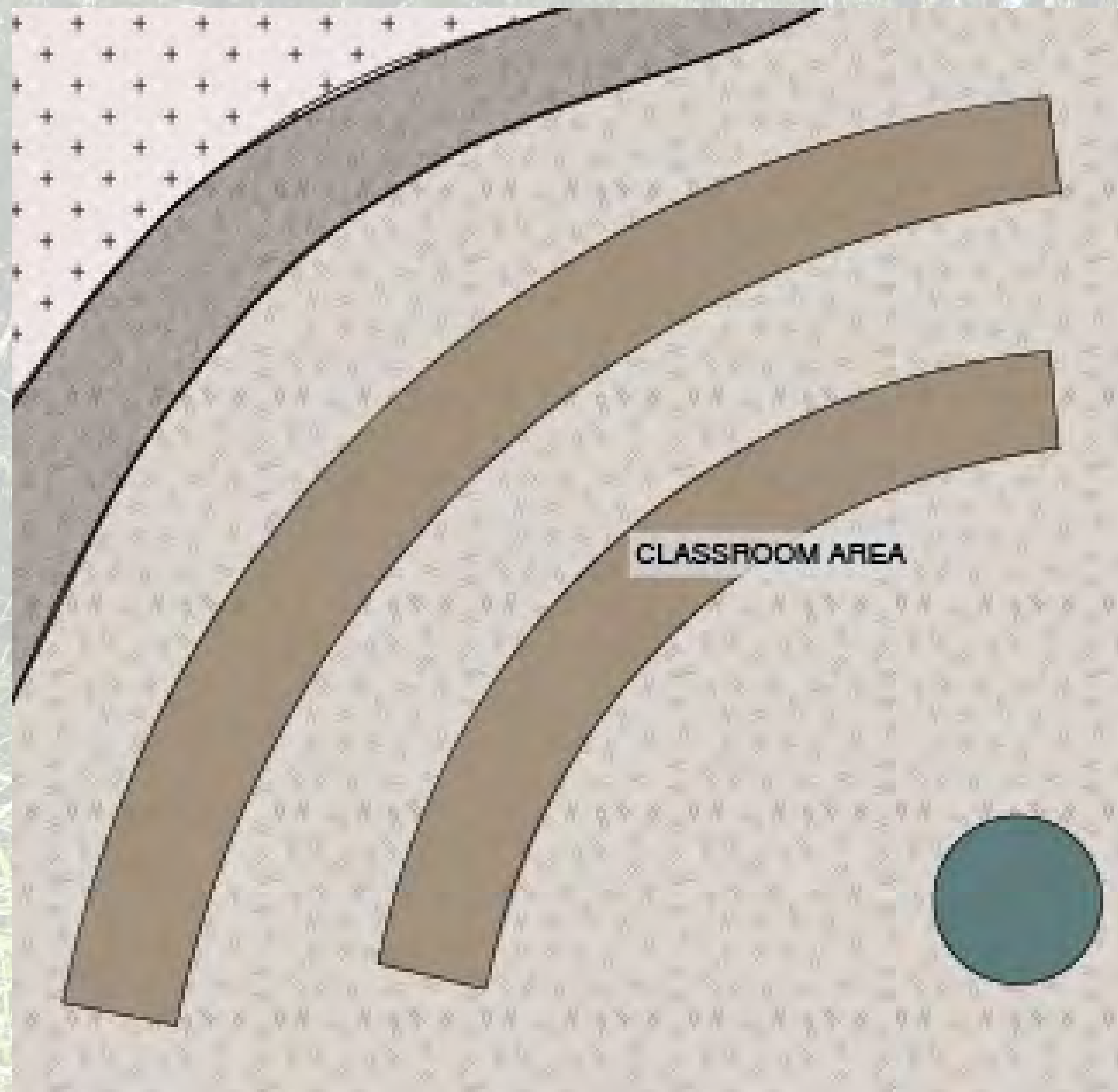
Climbing and Dynamic Area

THIS IS THE BIGGEST SPACE OF THE LOT. THIS SPACE ALLOWS FOR KIDS TO EXPLORE THE NATURE PLAYGROUND. THEY CAN CLIMB THE FEATURES. MULCH WOULD BE THE IDEAL GROUND COVER FOR THIS SPACE. NATURE PLAY GROUNDS ARE THE MOST COMMON FEATURES IN OUTDOOR PARKS.



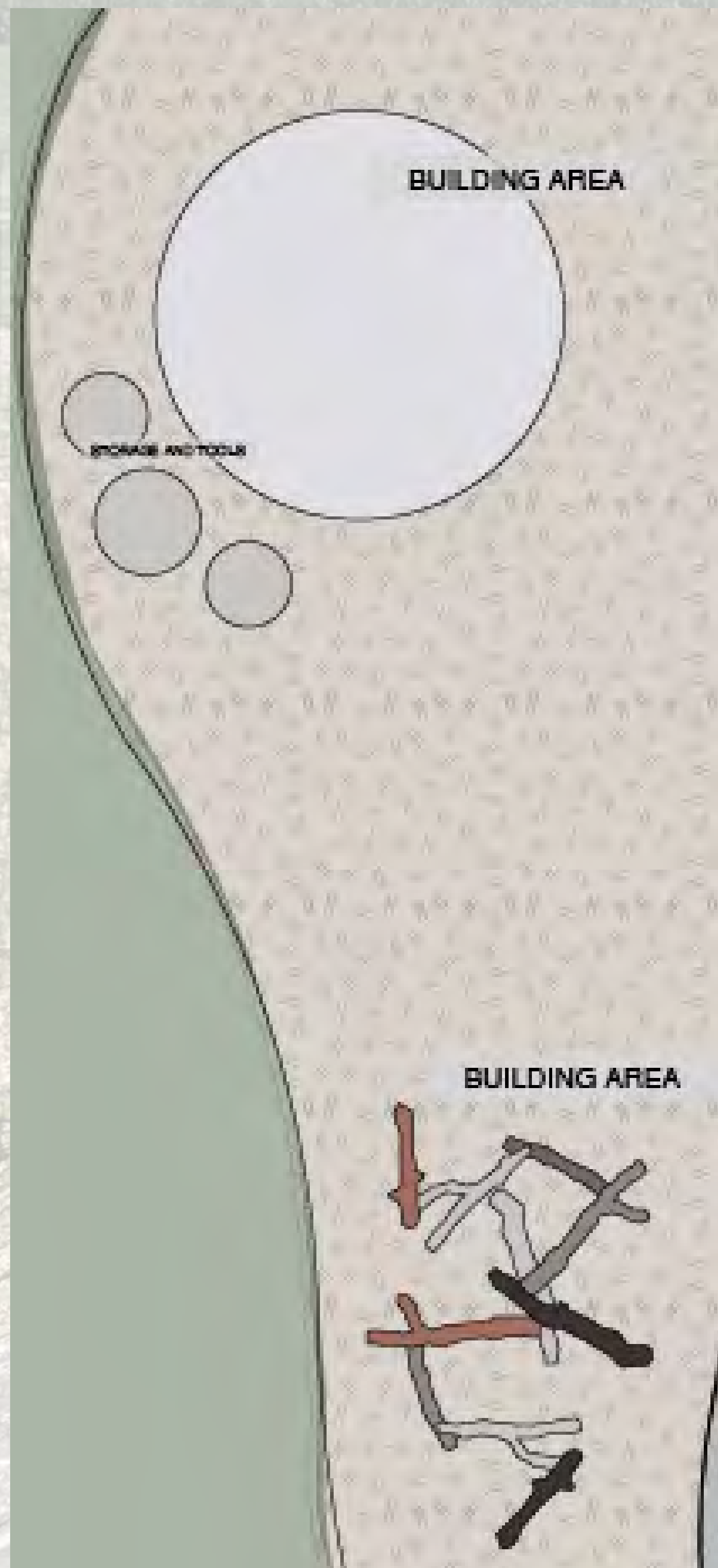
Classroom 2

THIS CLASSROOM IS TUCKED INTO THE SIDE OF THE LARGE PINES. IT ALLOWS FOR A NICE SHADED AREA THE MAJORITY OF THE DAY. THE BENCHES CAN BE CHANGED BUT A CURVED CONCEPT WOULD CLOSE OFF THE SPACE.



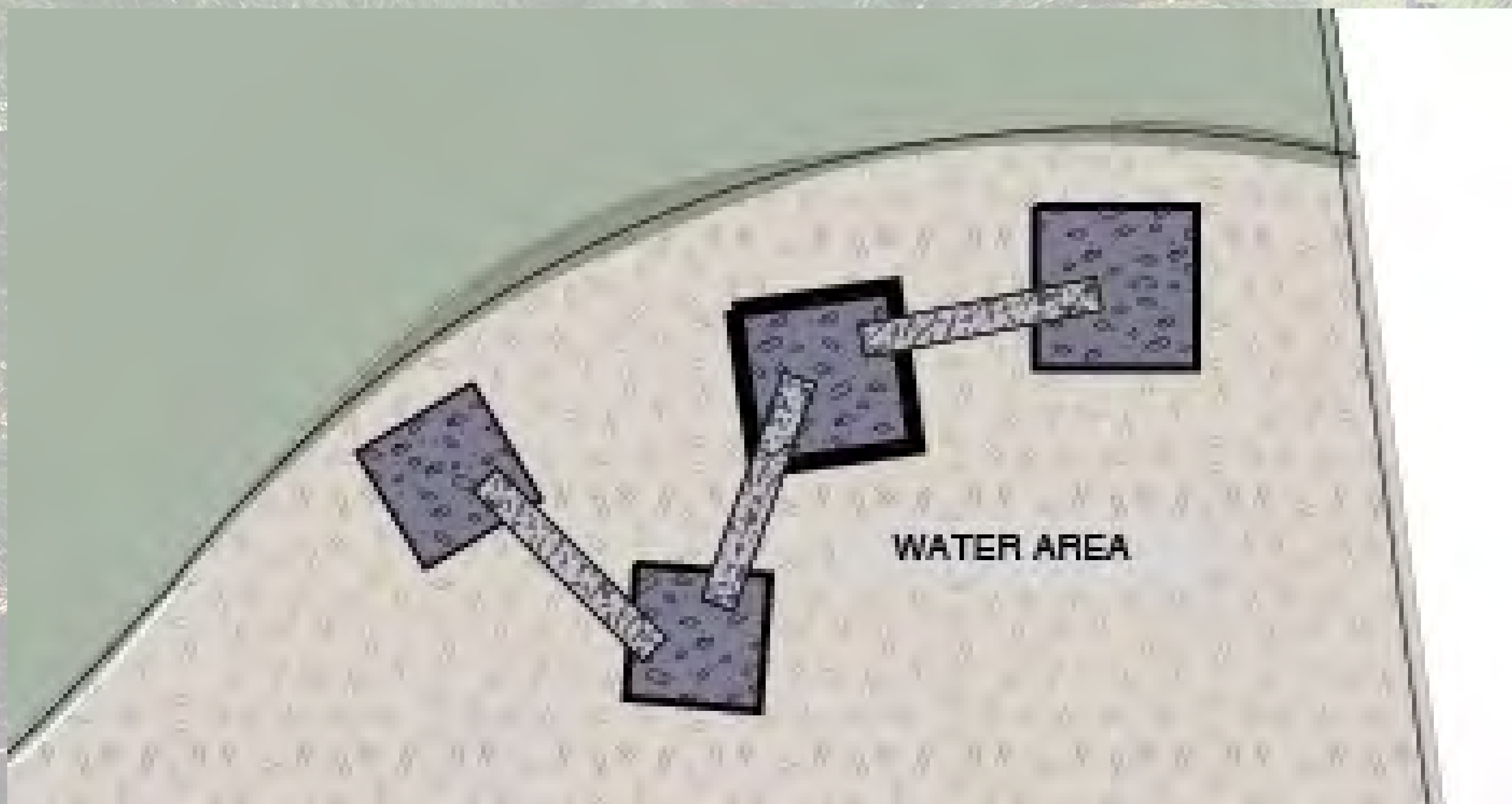
Building Area

THE BUILDING AREA IS A PLACE FOR THE KIDS TO EXPERIMENT WITH WITH DIFFERENT ITEMS. LOGS ARE A GOOD IDEA FOR THEM TO USE TO BUILD MANY THINGS. A TURF PAD WILL GIVE A FLAT AREA TO USE AND STORAGE CAN BE USE TO STORE THE SMALL ITEMS.



Water Area

THE WATER AREA IS A PLACE FOR THE KIDS TO EXPERIMENT WITH THE WAY WATER FLOWS. THERE ARE MANY DIFFERENT IDEAS FOR THE KIDS TO EXPERIMENT WITH WATER. THESE FEAUTRES CAN ALSO LEAD INTO THE CREEK BEHIND IT.



Other Ideas

